



# HVAC-R

## CATALOGUE

VOL 24.2

**Panasonic**



**Rinnai**



**ebmpapst**



**Monkeytee**



Glowbal NZ Limited

11 Pavilion Dr, Airport Oaks, Auckland, New Zealand

+64 9 254 4500

sales@glowbal.co.nz | www.glowbal.co.nz



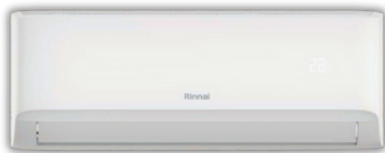
<b>Contents</b>	<b>Page #</b>
Heat Pumps & Accessories	2-5
Refrigerants, Cylinders & Accessories	7-9
Pair Coils	10
Ducting & Accessories	11
Base Mounts	12
Wall Brackets	12-13
Roof Mounts	13
Condensate Heat Pumps	14
Chemicals	15
Temperature Controllers	16
Axial Fans & Motors	16-17



### Panasonic High Wall R32 Aero Series

Nanoe X Technology, Wifi & Wired Capabilities,  
Blue Fin Condenser

CS/CU-Z20AKR	2.05 kW
CS/CU-Z25AKR-1	2.5 kW
CS/CU-Z35AKR	3.5 kW
CS/CU-Z42AKR	4.2 kW
CS/CU-Z50AKR	5.0 kW
CS/CU-Z50AKR-1	5.0 kW
CS/CU-Z60AKR-1	6.0 kW
CS/CU-Z71AKR-1	7.1 kW
CS/CU-Z80AKR-1	8.0 kW
CS/CU-Z90AKR	9.0 kW



### Rinnai R32 Pro Series

Pro-pel coil protection, Wifi control, Eco cool,  
Daily & weekly timer, Zoning

HSNRP26	2.5 kW Cool / 2.7 kW Heat
HSNRP35	3.5 kW Cool / 4.0 kW Heat
HSNRP50	5 kW Cool / 5.2 kW Heat
HSNRP60	6 kW Cool / 6.2 kW Heat
HSNRP70	7 kW Cool / 7.5 kW Heat
HSNRP80	8 kW Cool / 8.5 kW Heat



### Clivet AHU

Premium-spec Air Handling Units designed for high-profile projects and high-humidity applications. Modular designs offer the flexibility to add components as needed. AHU feature unitary structures that provide superior cold-bridge-free performance, reduced air leakage, and an elegant appearance.

- Thermal Bridging Class: TB1 ( $0.75 \leq k < 1.00$ )
- Thermal Transmittance Class: T2 ( $0.5 < U \leq$
- Eurovent Certified Testing: Compliant with EN 1886



### Heat Recovery & Full Fresh Air Units

Clivet offers the largest range of heat recovery and full fresh air package units available globally. Our extensive selection enables us to deliver unmatched technical and energy-efficient solutions.

Our Full Fresh Air Units provide flexible options and configurations to meet diverse needs.



### Clivet Roof Top Package Units

We offer the largest range of DX and Roof Top Packaged systems available globally. With a wide variety of capacities, we are equipped to address all your HVAC needs, delivering both technically advanced and energy-efficient solutions.



### Clivet Eurovent & AHRI Chillers

Clivet Eurovent & AHRI Certified Air-Cooled Chillers are available in a range of models, including Twin Section Liquid Chillers equipped with Inverter Screw Compressors and Multi-Stage Scroll Compressors.

These chillers are compatible with a variety of refrigerants, including R1234ze, R32, R410A, and R513A.



### Clivet Multi-function Chillers

Clivet Eurovent 4 Pipe Multi-Function Chillers offer exceptional flexibility in providing both cooling and heating solutions simultaneously.

These chillers are equipped with onboard pumps, buffer tanks, and advanced coil protection, ensuring high performance, reliability, and durability.

Clivet offers a full range of Multi-Function Chillers designed to meet the diverse needs of clients, making them ideal for applications requiring concurrent temperature control.



### Clivet Air Cooled Liquid Chillers

Air-cooled liquid chillers and heat pumps featuring scroll inverter technology for commercial and industrial installations, utilising low GWP R32 refrigerant.

- Cooling Only: 43-98 kW range
- Reversible Heat Pump: 22-55 kW range
- Silenced Versions: Sound levels reduced by -8 dB
- Super-Silenced Versions: Sound levels reduced by -10 dB



### Mitsubishi Avanti Series Single Split

Single phase, 3D Auto airflow, Reverse cycle, timer & scheduling functions, wall mounted, LED control

SRK20-50ZSA-W	2.0kW   2.5kW   3.5kW   5.0kW
SRC20-35ZSA-W	2.0kW   2.5kW   3.5kW   5.0kW
SRC50ZSA-W	2.0kW   2.5kW   3.5kW   5.0kW



### Mitsubishi Bronte Series Single Split

Single phase, 3D Auto airflow, Reverse cycle, timer & scheduling function, wall mounted, Wifi controls

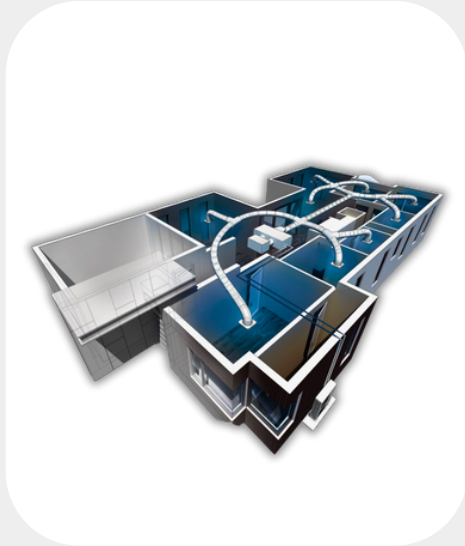
SRC63ZRA-W	6.3kW   7.1kW   8.0kW   9.5kW   10kW
SRC71-80ZRA-W	6.3kW   7.1kW   8.0kW   9.5kW   10kW
SRC95ZRA-W	6.3kW   7.1kW   8.0kW   9.5kW   10kW
RDCA100VNA-W	6.3kW   7.1kW   8.0kW   9.5kW   10kW



### Rinnai Pro Series Ducted Heat Pumps

Mid Static - slim ducted, Pro-pel coil protection, Wifi control, Eco cool, Daily & weekly timer, Zoning

DSNR07B1	7.3 kW Cool / 7.5 kW Heat
DSNR09B1	9.0 kW Cool / 10.0 kW Heat



### Rinnai R32 Pro Series

High static - ducted, Pro-pel coil protection, Wifi control, Eco cool, Daily & weekly timer, Zoning

DSNR11B1	10.5 kW Cool / 11.5 kW Heat
DSNR13B1	12.5 kW Cool / 13.0 kW Heat
DSNR15B1	14.0 kW Cool / 14.5 kW Heat
DSNR18B1	17.0 kW Cool / 18.0 kW Heat



### Actron Air ESP Platinum Ducted HP

Indoor / Outdoor, TRU-INVERTER Technology, Coated Oil Protection, 1 Phase, Pipe size: 3/8" X 3/4"

CRV2-14AS • ERV2-14AS	17.5 kW Cool / 15.4 kW Heat
CRV3-17AS • ERV3-17AS	17.5 kW Cool / 9.0 kW Heat
CRV4-19AS • ERV4-19AS	19.0 kW Cool / 20.0 kW Heat

SRD131C • SRV131E	12.27 kW Cool / 12.16 kW Heat
SRD151C • SRV151E	14.37 kW Cool / 15.0 kW Heat
SRD191C • SRV191E	18.64 kW Cool / 18.52 kW Heat







**R134A-13.6 Refrigerant Gas Cylinder**

For HVAC-R equipment, various applications



**R410A-11.3 Refrigerant Gas Cylinder**

For HVAC-R equipment, various applications



**R407C-11.3 Refrigerant Gas Cylinder**

For HVAC-R equipment, various applications



**R407F-11.3 Refrigerant Gas Cylinder**

For HVAC-R equipment, various applications



**R507-11.3 Refrigerant Gas Cylinder**

For HVAC-R equipment, various applications



**R452A-11.35 Refrigerant Gas Cylinder**

For HVAC-R equipment, various applications





**R449A-11.35 Refrigerant Gas Cylinder**

For HVAC-R equipment, various applications



**R404A-10.9 Refrigerant Gas Cylinder**

For HVAC-R equipment, various applications



**R454B-9.5 Refrigerant Gas Cylinder**

For HVAC-R equipment, various applications



**R290-5.0 Refrigerant Gas Cylinder**

For HVAC-R equipment, various applications



**R32-3.0 Refrigerant Gas Cylinder**

For HVAC-R equipment, various applications



**R600A-3.0 Refrigerant Gas Cylinder**

For HVAC-R equipment, various applications



### Recovery Gas Cylinder

Dot approved, 21.6 & 41.9 L bottles (20 & 40 kg), Y-Valve liquid/vapour, 3/4" NPT opening accepts 80%

RRC-21.6L  
RRC-41.9L



### Adapter Valve for Gas Cylinder

For HVAC-R equipment, various applications



### Bernzomatic MAPP Gas Cylinder

Propylene, Suitable for brazing torch, 400GM

MAPP



### Disposable Oxygen Cylinder

For Heavy Duty, Hi-temp usage  
suitable for Bromic kit, 136GM

OXY



### Silver Brazing Rod

2.4 mm Diameter x 750 mm Length  
15% silver, brown tip

P15-1KG



### **Glowbal Pair Coils**

Pre-Insulated copper, R410A & AS/NZS 1571 compliant

AP-23

1/4" x 3/8" pipe thickness  
0.8 x 0.8mm tube wall thickness



### **Glowbal Pair Coils**

Pre-Insulated copper, R410A & AS/NZS 1571 compliant

AP-24

1/4" x 1/2" pipe thickness  
0.8 x 0.8mm tube wall thickness



### **Glowbal Pair Coils**

Pre-Insulated copper, R410A & AS/NZS 1571 compliant

AP-25

1/4" x 5/8" pipe thickness  
0.8 x 1.0mm tube wall thickness



### **Glowbal Pair Coils**

Pre-Insulated copper, R410A & AS/NZS 1571 compliant

AP-35

3/8" x 5/8" pipe thickness  
0.8 x 1.0mm tube wall thickness



### **Glowbal Pair Coils**

Pre-Insulated copper, R410A & AS/NZS 1571 compliant

AP-36

3/8" x 3/4" pipe thickness  
0.8 x 1.2mm tube wall thickness



### Toyo Ducting & Fittings 80MM

**TD-80**  
Ducting  
2M lengths



**DC-80**  
Ducting  
Cap



**DL-80**  
Ducting  
90Deg Elbow



**DLW-80**  
Ducting  
45Deg Elbow



**DK-80**  
Ducting  
Corner



**DJ-80**  
Ducting  
Joint



**DT-80**  
Ducting  
T-Joint



**DF-80L**  
Ducting Long Flexi - Joint

**DF-80S**  
Ducting  
Flexi - Joint



**DE-80**  
Ducting  
End Socket



**DS-80**  
Ducting  
Ceiling Cap



### Toyo Ducting & Fittings 120MM

**TD-120**  
Ducting  
2M lengths



**DC-120**  
Ducting  
Cap



**DL-120**  
Ducting  
90Deg Elbow



**DB-120**  
Ducting  
Branch Joint



**DK-120**  
Ducting  
Corner



**DJ-120**  
Ducting  
Joint



**DT-120**  
Ducting  
T-Joint



**URH-14**  
Drainpipe Double layer  
14mm

**DF-120**  
Ducting Long  
Flexi - Joint

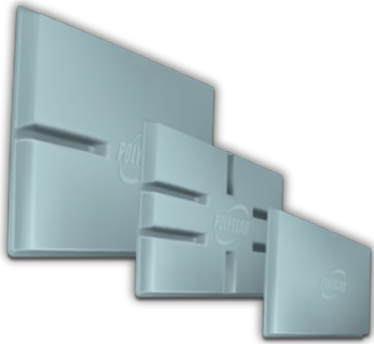


**DR-120**  
Ducting  
End Socket



**DS-120**  
Ducting  
Ceiling Cap





### **Polyslab HVAC-R Base Mounting**

UV Resistant, dimensions: 465 x 885 x 51 MM (medium) 160 KG load rating, also available in small/large

PS465 (medium)



### **PVC Floor Support**

Dimensions: 450mm, with stainless steel nuts & bolts

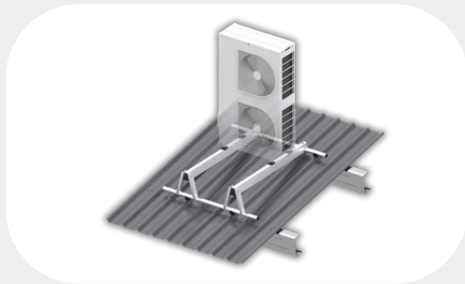
FSP2



### **Wall Brackets for A/C Units**

Two Sizes, for A/C Condensers, Gav & powder coated, max weight 100 KG / 150 KG

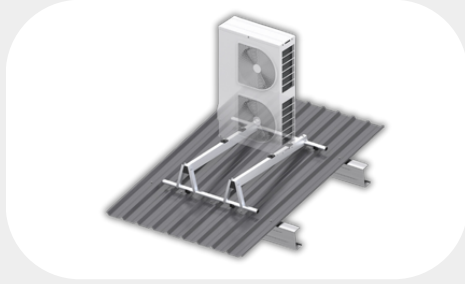
HL-450 / HL-550



### Monkeytoe Condensor Bracket 0-80KGS

Roof mounts & wall brackets, adjustable aluminium

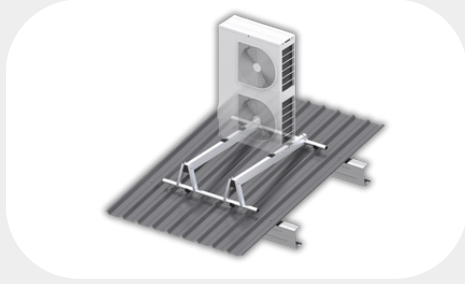
CS001.12.3      Light Weight Single Mount  
1200mm Purlins  
300mm Adjustable support



### Monkeytoe Condensor Bracket 0-80KGS

Roof mounts & wall brackets, adjustable aluminium

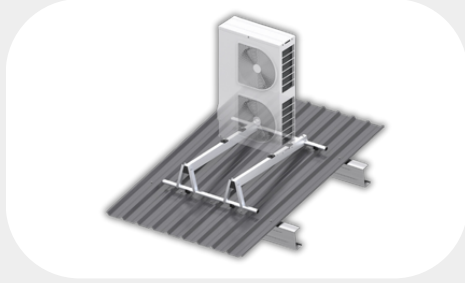
CS001.15.6      Light Weight Single Mount  
1500mm Purlins,  
600mm Adjustable support



### Monkeytoe Condensor Bracket 0-80KGS

Roof mounts & wall brackets, adjustable aluminium

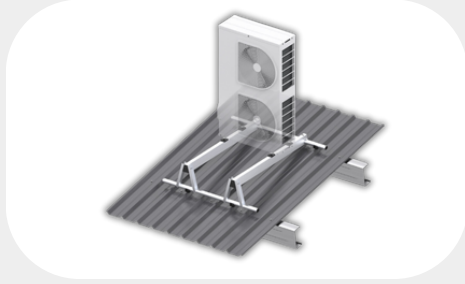
CS001.18.6      Light Weight Single Mount  
1800mm Purlins,  
600mm Adjustable support



### Monkeytoe Condensor Bracket

Roof mounts & wall brackets, adjustable aluminium

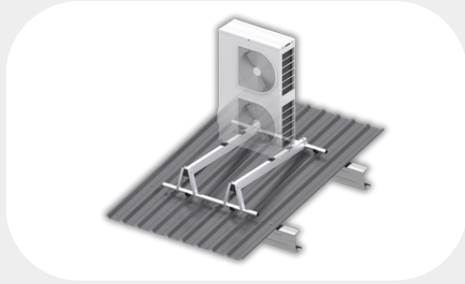
CS001.12.3      Heavy Duty Single Mount  
1200mm Purlins,  
300mm Adjustable support



### Monkeytoe Condensor Bracket 80-150KGS

Roof mounts & wall brackets, adjustable aluminium

CS001H.15.6      Heavy Duty Single Mount  
1500mm Purlins,  
600mm Adjustable support



### Monkeytoe Condensor Bracket 80-150KGS

Roof mounts & wall brackets, adjustable aluminium

CS001H.18.6      Heavy Duty Single Mount  
1800mm Purlins,  
600mm Adjustable support



### Blue Diamond MicroBlue

Flow: 5L/HR, Lift: 5M, Head: 2M

Microblue + Reservoir (HLA)

X86-001



### Blue Diamond MiniBlue

Flow: 8L/HR, Lift: 5M, Head: 5M

Miniblu + Cooling Signal

X87-504



### Blue Diamond MaxiBlue

Flow: 14L/HR, Lift: 8M, Head: 8M

Maxiblu + Reservoir (FSA)

X87-701





### Green Earth Coil Disinfectant

EPA Registered, Hospital Grade

R-CDD/1 • R-CDD/5     1 Litre Sprayer, 5 Litre bottle



### Green Earth Evaporator Coil Cleaner

Also available in 20 Litres

R-ECC/1 • R-ECC/5     1 Litre Sprayer, 5 Litre bottle



### Green Earth Foam-Brite Alkaline Condenser Cleaner

Also available in 20 Litres

R-FCC/1 • R-FCC/5     1 Litre Sprayer, 5 Litre bottle



### Green Earth Air Filter Cleaner

Biodegradable

R-FCD/1     1.0 Litre c/w Sprayer



### Green Earth Air Filter Cleaner

Biodegradable

R-FCD/5     5.0 Litre bottle



### Cal-Blue Micro Leak Detector

Freeze Protective & non-Corrosive

4182-24     0.95 Litre c/w Sprayer



### Dixell CX Series Temp Controllers

Medium Temp Controller with “off cycle” defrost. Panel mount, dual humidity function, 230V AC. Fan relay, auxiliary alarm relay & Digi Input for selected models.

XR20CX-B	1 x NTC
XR30CX-B	1 x NTC
XR40CX-B	2 x NTC
XR60CX-B	2 x NTC
XR70CX-B	2 x NTC



### Hidria Axial Fans

Diameter 300mm / 350mm, 5 Blade  
Nom. Watts (HS / LS): 80 / 145  
Speed RPM: 1370 / 1400  
3.5 / 6.0 KG Weight  
220-240V / 50Hz

09R-3028A-4M-3509 (300mm)
R11R-3530A-4M-3852 (350mm)



### EBM Axial Fans

Evaporator / Condenser fans  
Low Noise Level, 4P & 1PH AC, with basket guard

S4E300AS72CT-001	300mm
S4E350AN02CT-060	350mm
S4E400AP0244-CT0	400mm
S4E450AU0337-CT0	450mm
S4E500AM0301-CT0	500mm
S6E560AN0101	560mm
S6E630AN0101	630mm



### EBM Q Series Fan Motors

Shaded pole motor, drop in replacement,  
refrigeration compatible

M4Q045BD0138-CT0	5 Watt
M4Q045CA0138-CT0	7 Watt
M4Q045CA0338A01-CT0	10 Watt
M4Q045CF0138-CT0	16 Watt
M4Q045DA0538-CT0	23 Watt
M4Q045EA0138-CT0	25 Watt
M4Q045EF0138-CT0	34 Watt



### Hi-Pressure Nitrogen Piston Regulator

T screw adjustment & side entry, external safety  
relief valve, forged brass body & bonnet, sintered  
metal inlet filter, no soldered joints, single stage,  
Victor Style

Net Weight 1.5kg/ea

DW-P4-203-50M





**GLOWBAL**

Glowbal NZ Limited

11 Pavilion Dr, Airport Oaks, Auckland, New Zealand

+64 9 254 4500

[sales@glowbal.co.nz](mailto:sales@glowbal.co.nz) | [www.glowbal.co.nz](http://www.glowbal.co.nz)